

Introduction

► Feature

Line lifting: 1,270 kg / 2,800 lb wire rope first layer

Wire rope: 7.9 mm × 28m galvanized aircraft A7 × 19

Brake: Both Mechanical cone brake and permanent motor dynamic brakes

Control: Handheld pendant switch

► Unpacking

- Hoist assembly..... 1 pc
- Control box..... 1 pc
- Remote control..... 1 pc
- Wire rope with hook..... 1 pc

► Read this manual carefully

Carefully read and understand this manual before operating the winch.

Careless winch operation may result in personal injury, danger to others and or damage to property

► Information requesting or parts ordering

Please specify the following information:

• Hoist PN	• Part description
• Serial number	• Replacement part number
• Quantity for each part	

Installation

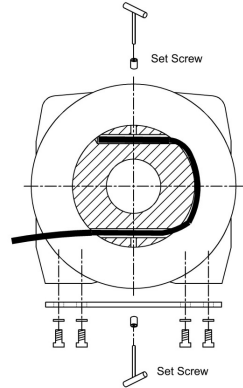
Before using the winch ensure all electrical components are in good condition and all connections are sound.

► Hoist mounting

- Four (4) M10 x 35L 8.8 grade with 44 N-m torque settings (maximum) high tensile steel bolts must be used in order to sustain the loads imposed on the winch mounting

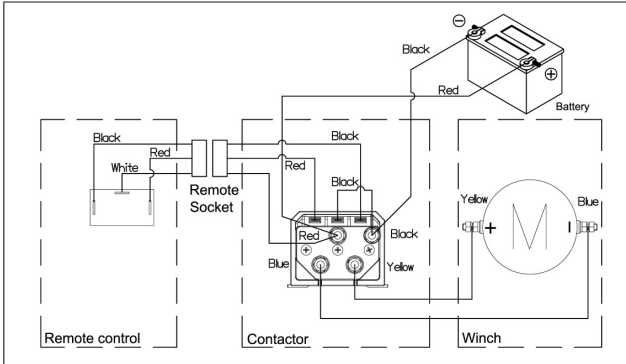
► Wire Rope Replacement

- Feed the end of the wire rope into No. 1 anchor hole in the drum and wind about 1/4 wrap of rope on the drum. Insert the wire rope into No. 2 hole and tighten the set screw securely.
- Make sure the first layer of wire rope is tight and maintain a freeboard at least 1.5 x rope diameter.
- Wire rope shall be wound in an under-wound orientation only.
- To compensate for uneven spooling and the decrease in line pull capacity as the drum fills up, use as short a wire rope as practical.



► Wiring Diagram

Attach the black lead firmly to the negative (-) battery terminal and red lead to the positive (+) battery terminal. The voltage drop for the winch motor must not exceed 10% of the nominal voltage of 12V/24vdc.



Warning

- The operator shall always work in compliance with the operating instructions.
- Do not Overload the winch. Overload protection should be provided.
- Not for the Transporting or lifting of personnel.
- Excessive inching should be avoided
- Don't try to move obstructed loads and side-pull of load is not allowed
- A minimum of 5 complete wraps of rope on the drum is required at all times

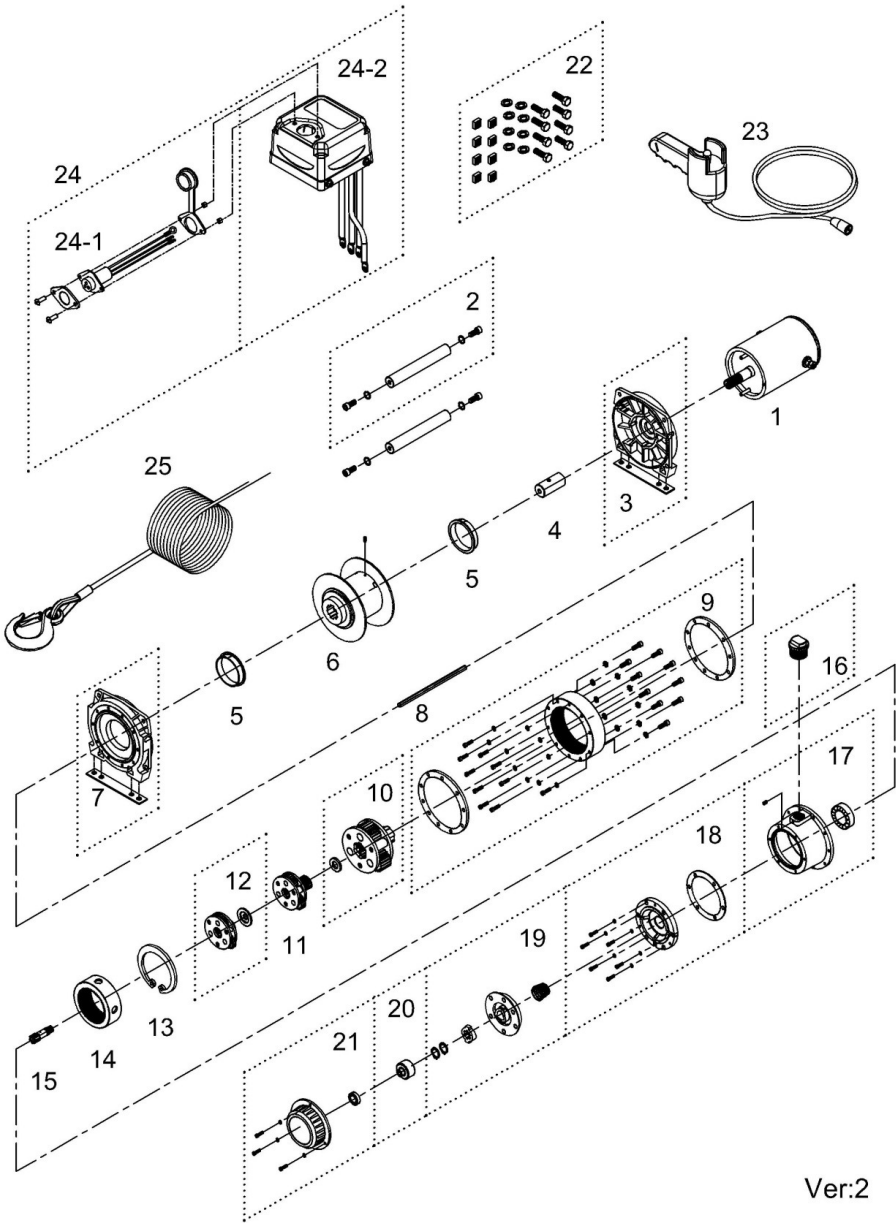
Performance Data

Load	mpm		Amp. Draw	Percentage Duty Cycle min / 10 min
	12V	24V		
kg / lb	12V	24V	12V / 24V	12V / 24V
No load	5.8	6.0	30 / 22	Cont.
227 / 500	5.5	5.7	45 / 30	7.0
454 / 1,000	5.1	5.5	70 / 45	4.5
680 / 1,500	4.6	5.3	95 / 60	3.0
907 / 2,000	4.3	4.6	135 / 80	2.5
1,270 / 2,800	4.0	4.4	160 / 100	2.0

Parts List

Item No.	Description	Part No.	Qty
1	Motor 12V	882373	1
	Motor 24V	882374	
2	Tie bar kit	882403	2
3	Motor support rack	882434	1
4	Motor coupling	880047	1
5	Drum bushing	880048	2
6	Drum kit	882401	1
7	Gearbox support rack	882435	1
8	1 st shaft	882402	1
9	3 rd ring gear kit	882436	1
10	3 rd stage carrier kit	881944	1
11	2 nd stage carrier kit	880056	1
12	1 st stage carrier kit	880057	1
13	Retaining ring	880058	1
14	1 st & 2 nd ring gear	880059	1
15	1 st pinion kit	880060	1
16	Tap screw	881423	1
17	Gear box kit	882437	1
18	Brake base	882438	1
19	Cone brake disc kit	882529	1
20	Brake clutch base	881434	1
21	Brake cover kit	882470	1
22	Mounting hardware	882486	1
23	Remote control	880025	1
24	Control box 12V	882360	1
	Control box 24V	882361	
24-1	Remote socket kit	880029	1
24-2	Control pack 12V	882362	1
	Control pack 24V	882363	
25	Wire rope w/hook	882404	1

Hoist Assembly (GTD2800)



Ver:2